

Business Ethernet Service.

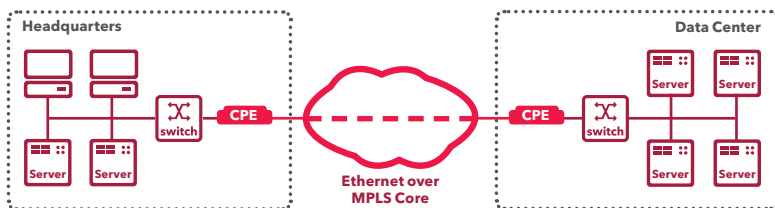
Flexible and efficient connectivity with maximum interoperability.

Business Ethernet service offers the advantages and simplicity of Ethernet layer 2 networking combined with the flexibility and cost effectiveness of a shared transport layer in the Sunrise backbone.

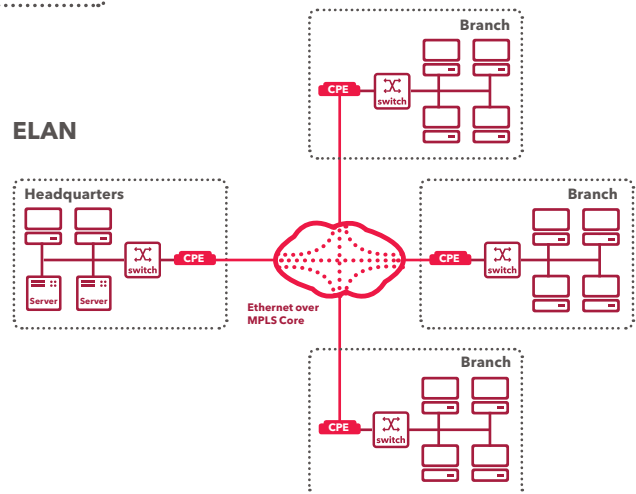
Whether you need to connect networks at a number of sites in order to create a single homogeneous network, or you need high-speed connectivity to a data center or storage network, or you need to transport a mixture of voice, data, Internet and streaming traffic, Business Ethernet Service provides a single simple connectivity solution that supports all your needs.

Business Ethernet Service provides cost effective and reliable connectivity between sites throughout Switzerland, with service speeds scalable from 2 Mbit/s to 10 Gbit/s. It is aligned with the Metro Ethernet Forum (MEF) recommendations and can be configured as point-to-point (ELine), multipoint-to-multipoint (ELAN) or point-to-multipoint (ETree).

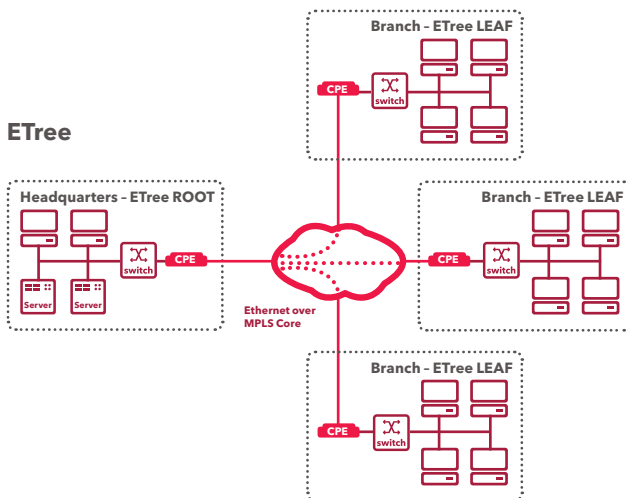
ELine



ELAN



ETree



Key features

MEF compliant services

- Standardized, carrier-class services that seamlessly extend the local area network (LAN) into the wide area network (WAN)
- Maximum compatibility with existing LAN infrastructure
- Supports voice, data and Internet connectivity

You're in control - networking that fits to your needs

- Choose from ELine, ELAN or ETree.
- Create your own virtual networks with no limit on the number of VLANs that you use.
- Ethernet headers transported without change
- Support for the most commonly used Layer 2 control protocols
- Connect as many devices to the network as you want: over 1000 MAC addresses can be supported.

Choose the bandwidth you need

- Services can be ordered with the following speeds: 2 Mbit/s, 4 Mbit/s, 6 Mbit/s, 8 Mbit/s, 10 Mbit/s, 20 Mbit/s, 50 Mbit/s, 100 Mbit/s, 200 Mbit/s, 500 Mbit/s, 1 Gbit/s, 10 Gbit/s.

Flexible choice of interface type

- 10/100/1000 BaseT, 100 BaseLX, 1000 BaseLX, 1000 BaseSX, 10 Gbase-SR/LR

Control how Ethernet frames are handled and prioritized

- Use Class of Service (CoS) to set the traffic priority:
 - Real-time class for low delay traffic, e.g. VOIP
 - Business class for critical data, e.g. ERP, CRM and SAP
 - Standard class for non-critical data, e.g. e-mail and Internet access

Your benefits at a glance

- Low cost expansion of the local area network (LAN) into the wide area network (WAN)
- Maximum compatibility with existing infrastructure
- Can be used for networking of Layer 3 **and** Layer 2 devices
- You remain in control

Sunrise Communications AG

Business Customers

Binzmühlestrasse 130
CH-8050 Zurich

Infoline 0800 555 552

sunrise.ch/business

If you require any further information, just give us a call.