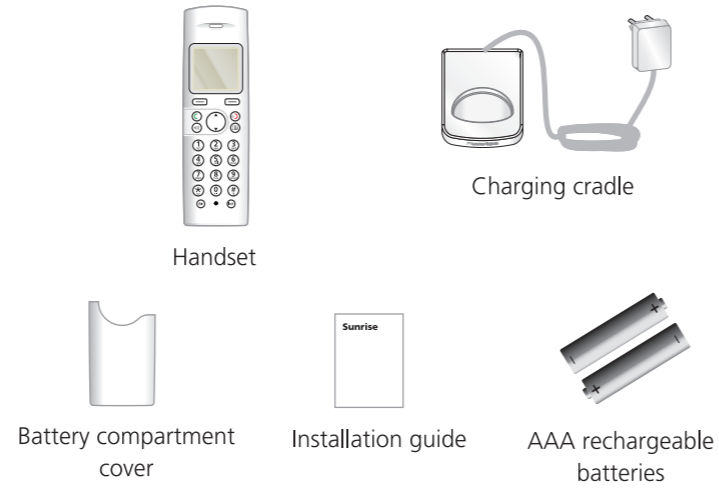


Sunrise

DECT Phone

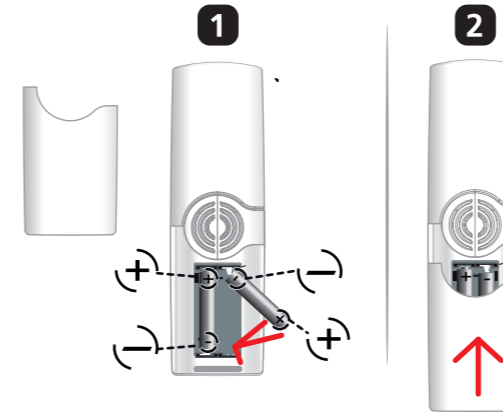
Installation guide

Your pack

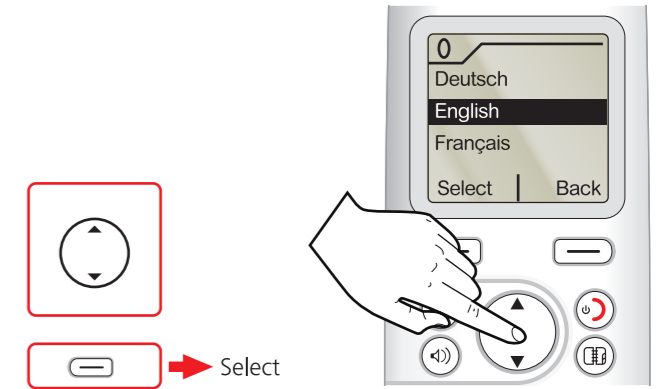


1 Switch on the handset

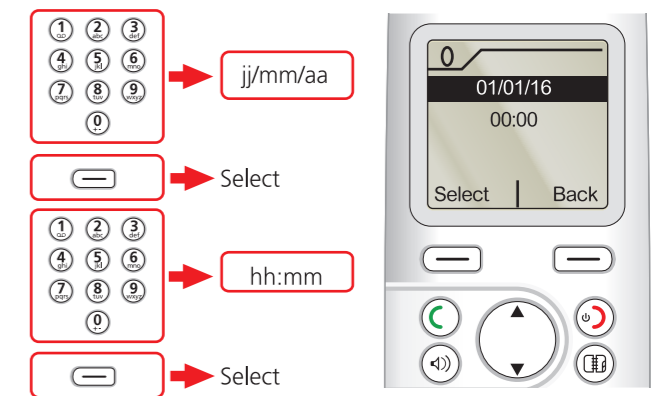
Insert the batteries and close the compartment with its cover.



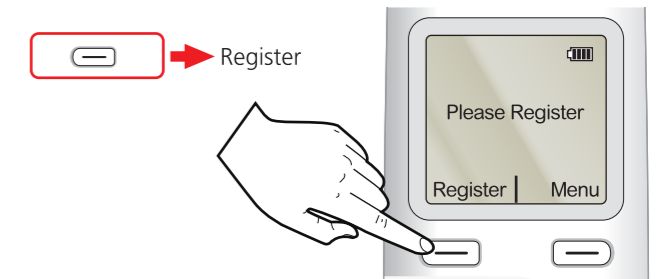
2 Select language



3 Set date and time

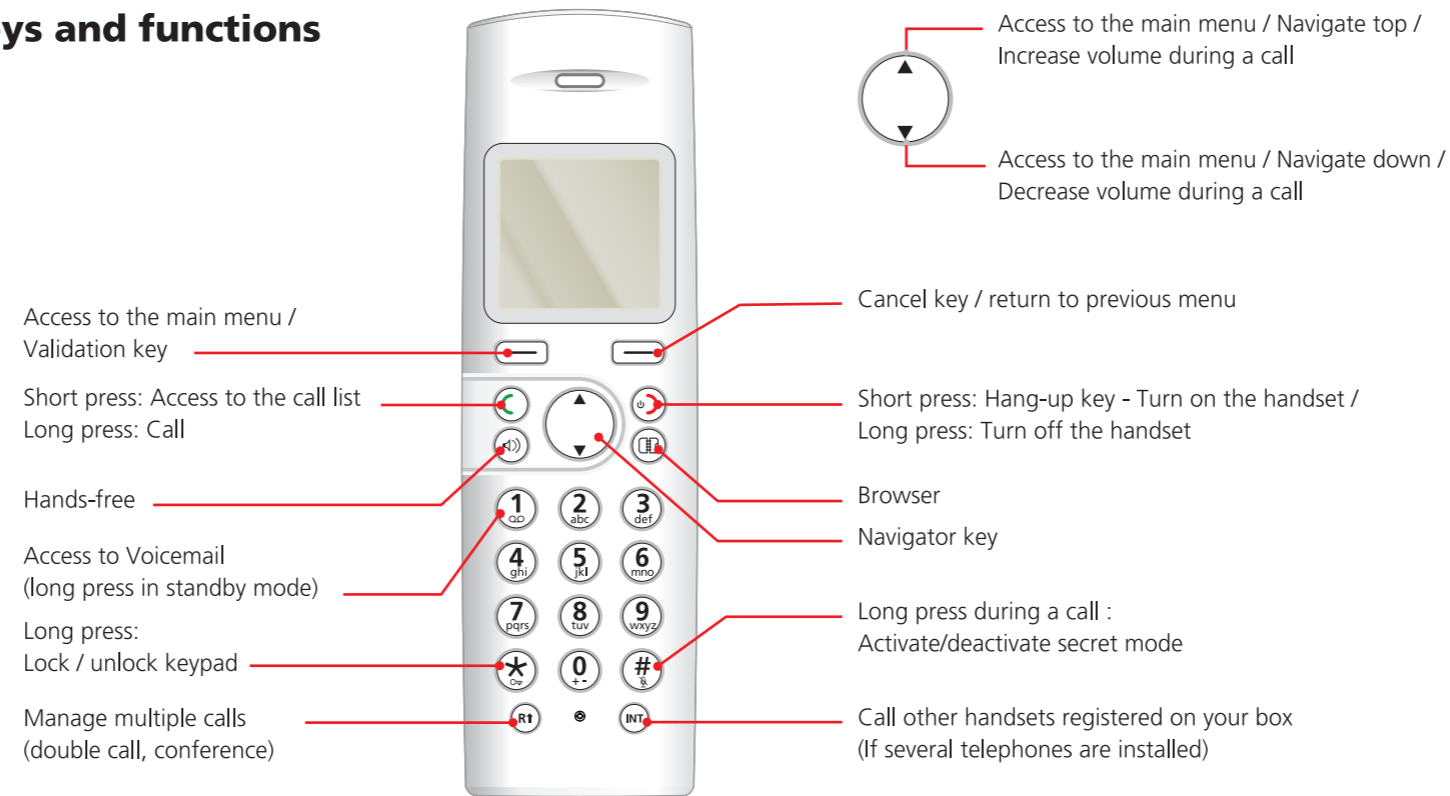


4 Press «Register»



Keys and functions

Sunrise

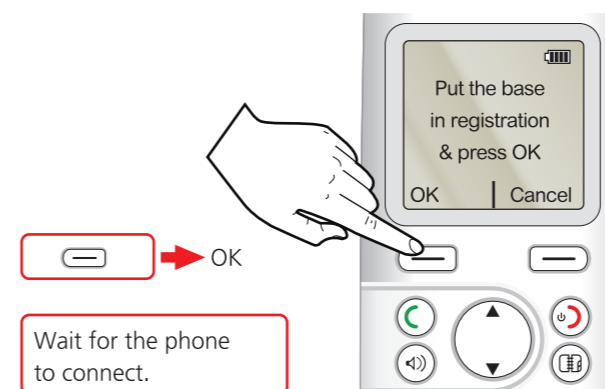


7 Charge your handset

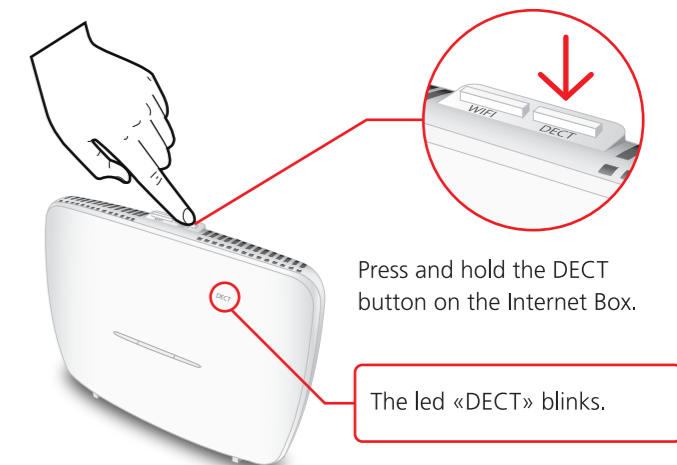


We recommend you to charge your phone for 15 hours without interruption after set-up.

6 Start the registration of the handset and the Internet Box




5 Activate pairing mode on the Internet Box





Press and hold the DECT button on the Internet Box.

The led «DECT» blinks.



Icons


 DECT signal available
If the handset is too far from the Internet Box, «Out of range» is displayed on the screen.


 Charge level display

 Keypad is locked.
Press and hold the  key to unlock.

 Ringtones and notification alerts are switched off.
Press and hold the  key to switch on.

 Microphone is disabled during a call.
During a call, press and hold the  key to switch on.

 Missed calls.
Go to : Menu > Calls > Missed calls

 New message on your voicemail / Answering machine

Menu

Contacts

- List
- Search
- Add
- Delete all
- Speed Dialing

Services

- Alarm
- Timer

Voicemail

- Line 1
- Line 2
- Line x

Audio

- External ringtone
- Internal ringtone
- Beeps
- Silent

Calls


- All calls
- Incoming calls
- Outgoing calls
- Missed calls
- Events

Settings


- Settings
 - Date/time
 - Auto hang/pick up
 - Language
 - Brightness
 - Update soft
- Adv. settings
 - Set handset
 - Set base
 - Set line
 - Selec. call line
 - Handset List

Calling

Make a call

Enter the phone number, then press .

OR

Press and hold the  key, then enter the phone number.

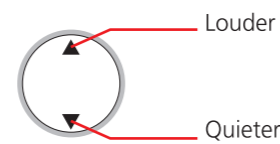
Answer a call

The phone rings, press .

End a call





Press .

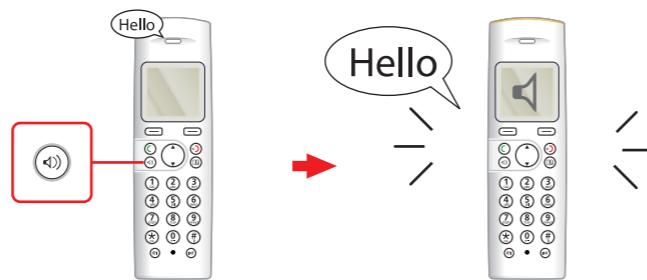
Adjust volume during a call



Hands free mode

During the call:

- Press . The icon  is displayed.
- To disable the hands-free mode, press the  key again. The icon disappears .



Phonebook

All your handsets access the phonebook of the Internet Box.

Add a contact


Menu > Contacts > Add

Enter the information using the keypad : first name, last name and phone number.

Select a ringtone, then confirm.

Call a contact from the phonebook list

Menu > Contacts > List (or Search)

Select a contact, then press .

Edit contacts

Menu > Contacts > List (or Search)

Select a contact, then confirm > Select > Edit

Update the information, then confirm.

Set up short dialing

Menu > Contacts > Speed Dialing > Save required phone number under No. 0 – 9.

No.  is reserved for your voicemail.


To call the saved number, press and hold the key.


Answering machine (mailbox)

When activated, after a number of ringing calls are forwarded to the answering machine of your box.

You can set up the answering machine from the user panel of your Internet Box.
For further details, refer to the user guide.

Voicemail

If you have received a new voicemail, the icon  appears on the handset screen.

To check your messages, press and hold the key .

Select the line and then call.

Voicemail is operational when your answering machine (mailbox) is disabled.

Safety instructions

> For safety reasons, never put the handset in the base station without the battery inserted or without the lid on the battery compartment as this could cause an electric shock.

To avoid damaging your handset/base, only use certified rechargeable batteries NiMH 1.2 V 800 mAh. Insert the batteries in the handset/base battery compartment respecting polarity.

> Only use the power unit supplied and connect it to the electricity mains in accordance with the installation instructions in this user manual and the details on the sticker regarding voltage, electrical current and frequency. As a precaution, if there is a risk of danger, the power plug can be pulled out to disconnect the 230 volt power supply. Therefore, the sockets should be near the device and easily accessible.

> Do not install your DECT telephone in a damp environment, such as a bathroom, washroom, kitchen, etc, and not within 1.50 meters of a source of water or outside. This device is designed for use in temperatures of between 5 °C and 40 °C.


> In regions greatly affected by electrical storms we recommend that you protect your telephone circuit with a special fixture for excess voltage.

> Do not attempt to remove screws or open the appliance. It does not contain any user-replaceable parts.

> Your DECT telephone has a range of approx. 50 metres indoors and up to 300 metres outdoors. The range can be affected by the proximity of metal objects, such as a television and electrical devices. Zones without reception may appear owing to elements in the building. This can cause brief interruptions in the conversation, caused by faulty transmission.

> Certain medical equipment and highly sensitive machines or security systems may be affected by the transmission power of the telephone. In these cases we recommend adhering to the safety information.

> If your product contains batteries, they must be disposed of at the designated collection points.

 The CE label confirms that the product complies with the 1999/5/EC regulations regarding wireless systems and telecommunications.

The declaration of compliance may be looked up on the <http://support.sagemcom.com> website or can be obtained from the following address:

Sagemcom Broadband SAS
250, route de l'Empereur
92848 Rueil-Malmaison Cedex - France

Environment

Environmental protection and sustainable development is an important priority for Sunrise. Sunrise has a policy of using environmentally-friendly systems and makes environmental protection an essential part of the life cycle of its products – from the manufacturing to the installation, operation and disposal.

Packaging

The logo (green point) on the packaging means that a fee is paid to an authorised national organisation to improve packaging recycling and the recycling infrastructure. Follow the local sorting regulations for this type of waste product in order to improve recycling.

Batteries

If your product contains batteries, they must be disposed of at the designated collection points.

The product

The crossed-out dustbin displayed on the product signifies that it belongs to the electrical and electronic equipment group. The regulations request you to carry out your own selective recycling collection.

For more information, refer to the complete user manual available online at : <https://www.sunrise.ch/en/residential/help/festnetz.html>