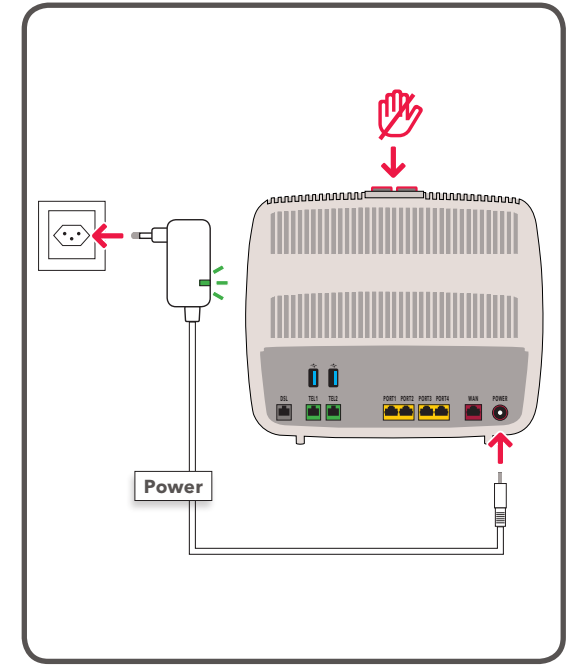


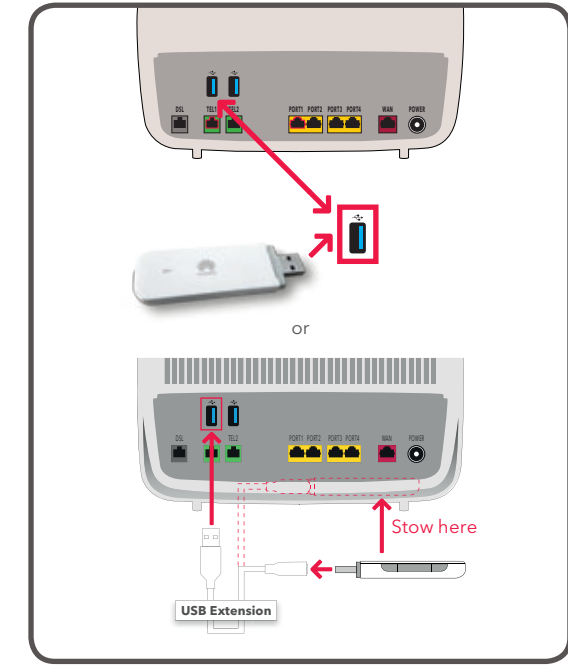
Instructions

Quick start
Start surfing now

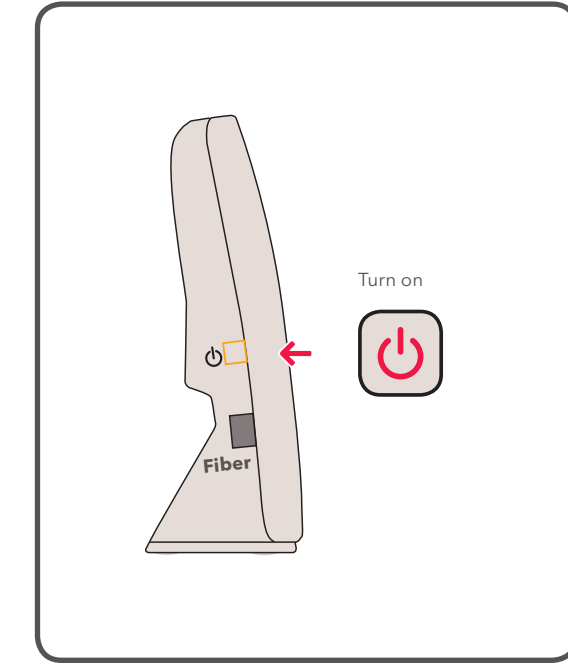
Installing the Sunrise Internet Box



Installing the USB stick

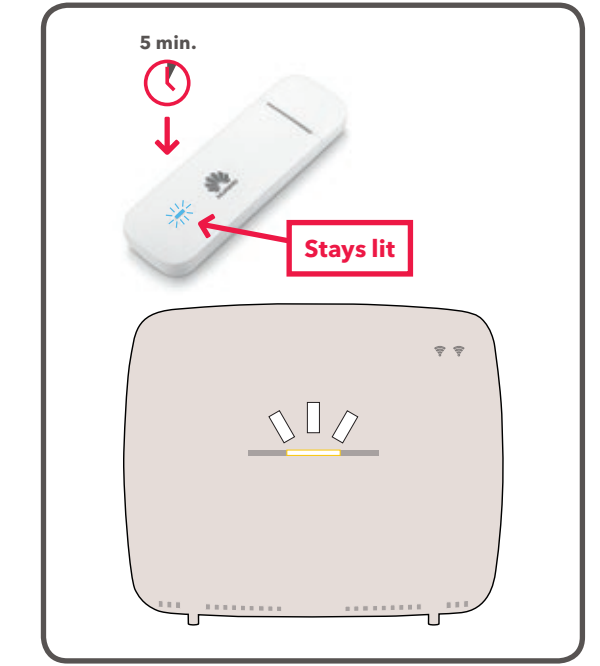


Turn on the Sunrise Internet Box



Synchronization

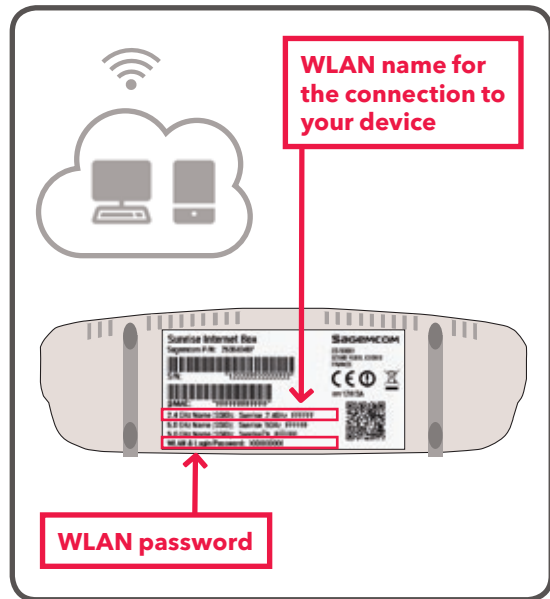
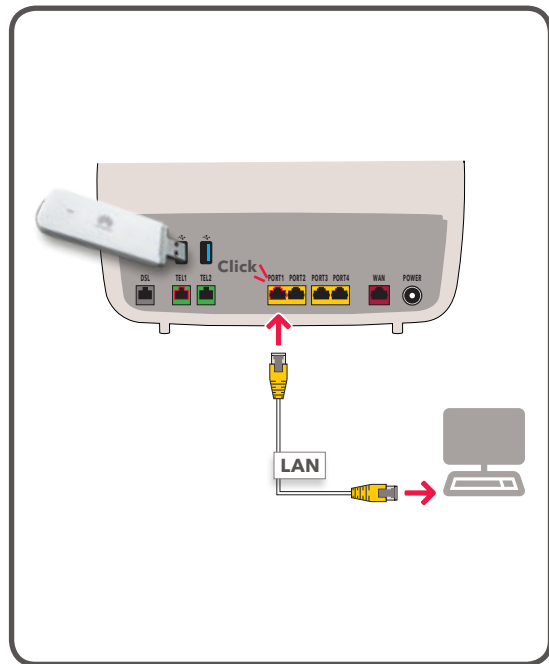
Ends when the light is a steady green or blue.



Connect the device with LAN (cable)

or

Connect the device with WLAN (Wi-Fi, no cable required)



For more information, go to sunrise.ch/sib

Done!

We will be providing you with information on the activation date for your line connection sometime in the next few days.

On the activation date, please connect your Sunrise Internet Box to the DSL/telephone outlet or the fiber optic box. You'll find further information on this topic in the quick start guide that came with your Sunrise Internet Box.

You will be surfing on the Sunrise mobile network at full 3G/4G speed* and without any data limits until the activation date.

Questions?

If you have any questions or need assistance, visit us at sunrise.ch/en/sib

We'll be happy to assist you.

Sincerely,
Your Sunrise team

Tip

Up until the activation date, place your Sunrise Internet Box in an area that has the best 4G reception (e.g. near a window).

Important

To ensure you receive all services from Sunrise Home, please only use the USB LTE stick in combination with the Sunrise Internet Box. Mobile calling, SMS, and roaming are not possible. The Internet connection will be blocked as soon as you use the SIM with a different device.

* Maximum speed on 4G network (high speed) is 100 Mbit/s (for downloads) and 10 Mbit/s (for uploads). The specified transmission speeds represent optimal performance and are not guaranteed. Actual Internet speed depends on factors such as topography, network coverage, distance to transmission tower, signal strength inside/outside buildings, or other factors, and may be slower than the specified maximum Internet speed. The quick start option is automatically deactivated 60 days after activation.