

# Quick Start

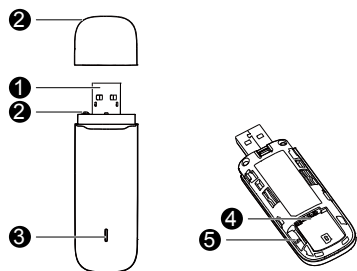
# Thank you for choosing the Mobile Broadband USB Stick. With your USB Stick, you can access a wireless network at high speed.

## Note:

This manual describes the appearance of the USB Stick, as well as the procedures for preparation, connection steps.

## Getting to Know Your USB Stick

The following figure shows the appearance of the USB Stick. It is provided only for your reference. The actual product may be different.

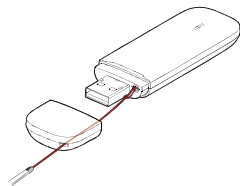


### ❶ USB Connector

It connects the USB Stick to a PC.

### ❷ Strap Hole

You can tie the cap and the USB Stick together by threading a strap through the strap holes, so that the cap will not be easily lost.



### ❸ Indicator

It indicates the status of the USB Stick.

- Green, blinking twice every 2s: The USB Stick is powered on.
- Green, blinking once every 2s: The USB Stick is registering with a 2G network.
- Blue, blinking once every 2s: The USB Stick is registering with a 3G/3G+ network.
- Green, solid: The USB Stick is connected to a 2G network.
- Blue, solid: The USB Stick is connected to a 3G network.
- Cyan, solid: The USB Stick is connected to a 3G+ network.
- Off: The USB Stick is removed.

### ❹ SIM Card Slot

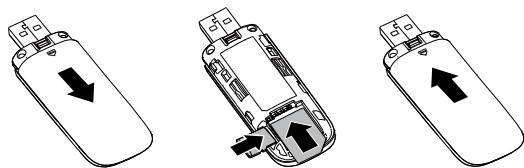
It holds a Subscriber Identity Module (SIM) card.

### ❺ microSD Card Slot

It holds a microSD card.

## Getting Your USB Stick Ready

1. Slide the cover to remove it from the USB Stick.
2. Insert the SIM card and the microSD card into the corresponding card slots, as shown in the following figure.
3. Replace the cover and click it into place.



### Note:

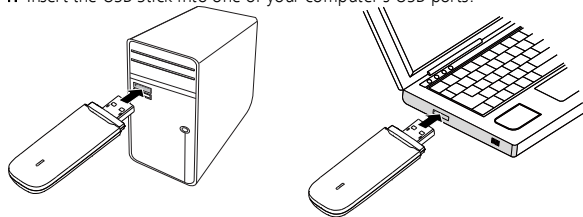
- The microSD card is an optional accessory. If it is not provided in the package, you can buy one yourself.
- Ensure that the beveled edge of the SIM card is properly aligned with that of the SIM card slot and the microSD card is inserted according to the direction as labeled on the microSD card slot.
- Do not remove the microSD or SIM card when the card is in use. Otherwise, the card as well as your USB Stick may get damaged and the data stored on the card may be corrupted.

## Using Your USB Stick

The procedure for installation depends on your computer's operating system. The following sections are based on Windows OS.

### Connecting to a Network

1. Insert the USB Stick into one of your computer's USB ports.



The computer identifies the new hardware and starts its installation automatically.

2. When the installation is complete, the USB Stick's web management page is displayed and the USB Stick connects to the network automatically. The USB Stick's web management page will be automatically displayed every time the USB Stick is inserted into the computer.

### Note:

- If the computer does not start the USB Stick's installation automatically, find the **AutoRun.exe** file in the USB Stick's root directory, and double-click the file to run it.
- If you are not connected to the network, access <http://192.168.8.1> to check the device status.
- If you cannot access <http://192.168.8.1>, disconnect other network connections, such as an Ethernet or Wireless Fidelity (Wi-Fi) connection, remove and then insert the USB Stick, or restart the computer.

### Disconnecting from a Network

Remove the USB Stick from the computer.

### Note:

- If you do not need to connect to a network, it is recommended that you remove the USB Stick from your computer to eliminate unwanted data traffic.
- Disconnect the USB Stick's dial-up connection through its web management page. Before you remove the USB Stick, make sure that the dial-up connection has been disconnected.

### Viewing Service Information

Visit <http://192.168.8.1> to view your service information.