



Quick Start

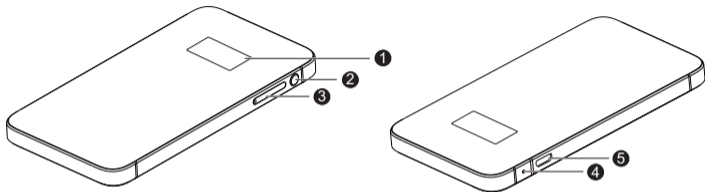
The Mobile WiFi function descriptions and illustrations in this document are for your reference only. The product you have purchased may vary.

For detailed information about the functions and configurations of the Mobile WiFi, refer to the online help on the web management page. To access Mobile WiFi's web management page, use a connected device's browser and visit **http://192.168.8.1**. The default user name and password is **admin**.

Note:

If the IP address conflicts with other IP addresses on the network, the IP address of the Mobile WiFi automatically changes. Please try **http://192.168.9.1**. If you cannot log in, contact an authorized dealer.

Appearance

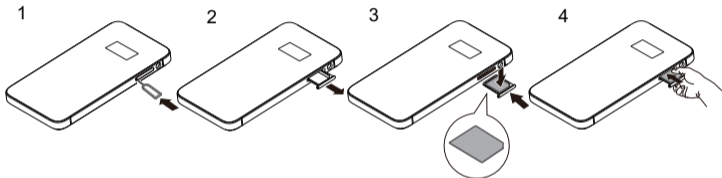


- ① Screen**
- ② Power button**
- ③ Micro-SIM card tray**
- ④ Reset button**
- ⑤ Micro USB port**

Press and hold the Reset button to restore to factory values

Installing

Install the micro-SIM card according to the illustration.



Note:

Do not remove the micro-SIM card when it is in use. Doing so will affect the performance of your Mobile WiFi and data stored on the micro-SIM card may be lost.

SSID and Wireless Network Encryption Key

When a Wi-Fi device establishes a connection to the Mobile WiFi for the first time, you may need to enter the default Service Set Identifier (SSID) and wireless network encryption key.

The default SSID and encryption key are printed on the Mobile WiFi label. The label is included in the package.

It is recommended that you log in to the web management page and change your SSID and network encryption key.

Press the power button to view the current SSID and network encryption key on the screen.